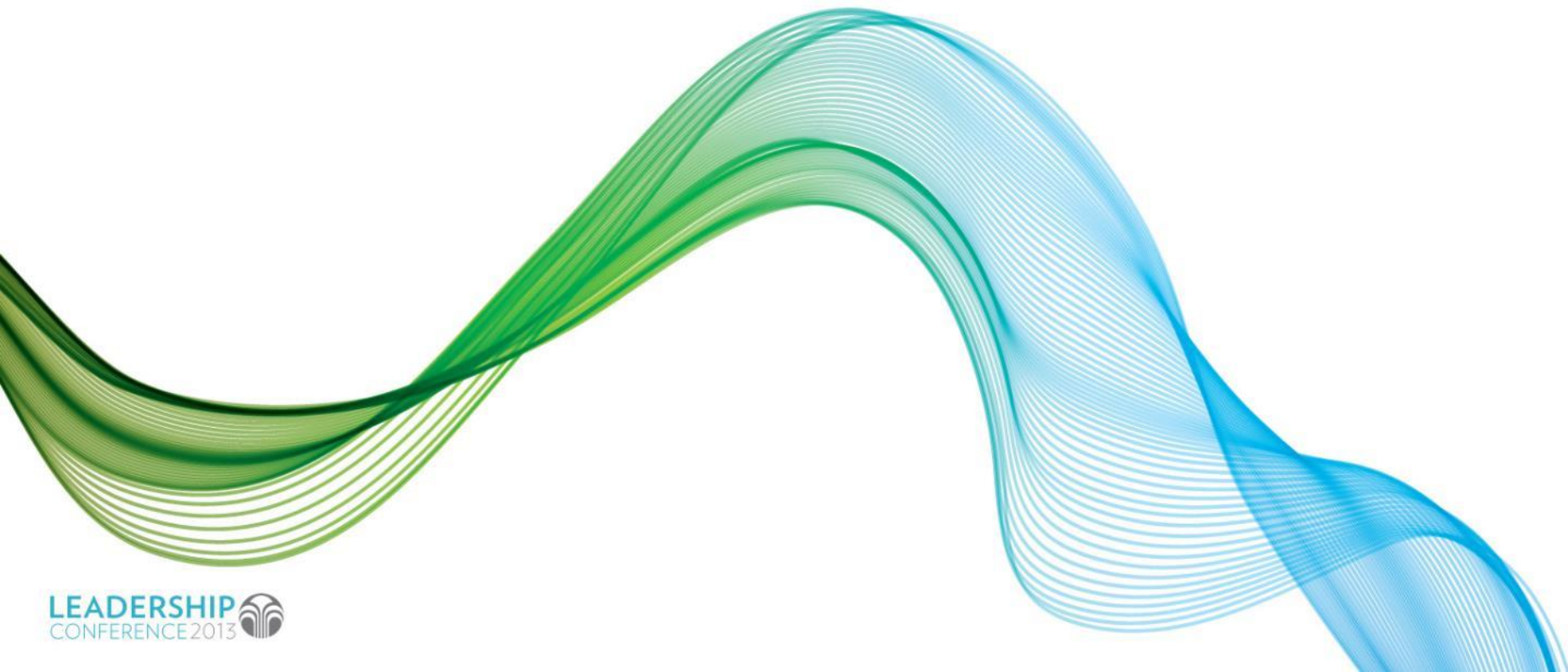


PHARMANEX®  
BIOPHOTONIC SCANNER S3



# BIOPHOTONIC SCANNER HISTORY AT A GLANCE



## S1 FIRST SCANNER

UNIVERSITY VARIATION  
10' MINUTE CALIBRATION  
QUALITATIVE RESULTS REQUIRED  
3 MINUTE SCAN

2000

2004

2008

# BIOPHOTONIC SCANNER HISTORY AT A GLANCE



## S2

50 MINUTE WARMUP  
30 MINUTE WARMUP  
90 SECOND SCAN  
15 MINUTE CALIBRATION  
ELIMINATE pCAL WITH EVEREST VERSION  
3 MINUTE SCAN  
LAPTOP AND BARCODE READER REQUIRED  
pCAL STANDARDS

2006

2007

2008

# BIOPHOTONIC SCANNER HISTORY AT A GLANCE



## S2

- 5 MINUTE WARMUP
- 90 SECOND SCAN
- SMALLER
- ELIMINATE pCAL WITH EVEREST VERSION
- PORTABLE
- NO BARCODE READER REQUIRED
- DIGITAL

2007

INTRODUCING  
2008

2009



BIOPHOTONIC SCANNER S3  
FASTER SCAN TIME

S1



3:00

S2



1:30

S3



0:30

BIOPHOTONIC SCANNER S3  
SMALLER FOOTPRINT

S1

S2

S3



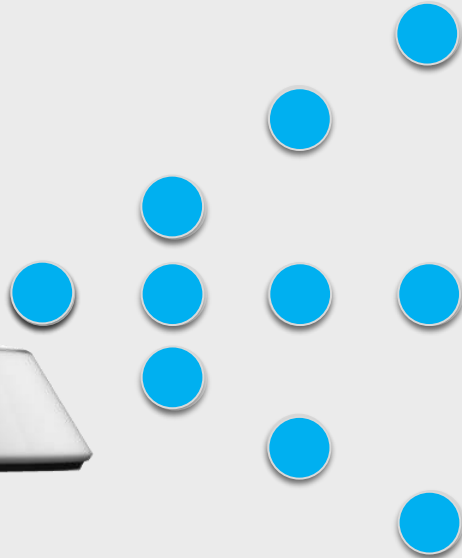
16.5 lbs

11.8 lbs

3.8 lbs

# BIOPHOTONIC SCANNER S3

## PORTABLE AND CONVENIENT



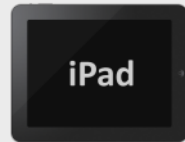
### EXTENDED BATTERY LIFE

500+ SCANS ON 1 CHARGE.  
YOU'LL RUN OUT OF ENERGY  
BEFORE IT DOES



### WIRELESS CONNECTIVITY

BLUETOOTH LE. NO WIRES  
NEEDED TO PERFORM A SCAN.



### iPAD SCANNER APP

iPAD MINI IS USED TO RUN THE  
SCANNER WIRELESSLY.

BIOPHOTONIC SCANNER S3  
PORTABLE AND CONVENIENT





# BIOPHOTONIC SCANNER S3

## DIGITAL SCAN CREDITS

33

### DIGITAL SCANS

NEW OPTION TO BUY AND USE DIGITAL SCANS.

ELIMINATES THE NEED FOR PHYSICAL CARDS



### SCAN CARDS

USE OF PHYSICAL SCAN CARDS WILL CONTINUE TO BE AN OPTION

 PHARMANEX®  
BIOPHOTONIC SCANNER S3

